

WESTCREST PARTNERS

COMPANY PROFILE

2025 EDITION



GLOBAL INVESTMENT PARTNERS

LONDON • SINGAPORE • DUBAI • SYDNEY

About Westcrest Partners

Westcrest Partners stands as the world's premier cryptocurrency broker and investment platform, dedicated to providing high-quality access to financial markets through our advanced execution model. We are a trailblazing entity committed to facilitating investors in unlocking extraordinary opportunities to amplify their capital investments.

Founded with a vision to democratize access to sophisticated financial markets, Westcrest Partners has evolved into a comprehensive investment ecosystem. Our platform represents a convergence of traditional financial expertise and cutting-edge technological innovation, creating a unique value proposition in the global investment landscape.

"We promise our investors a partnership built on transparency, integrity, and mutual success. By joining forces with a leading global broker, you gain access to institutional-grade trading infrastructure."

What distinguishes Westcrest Partners is our completely unique approach to EA (Forex software) and AI development. Unlike competitors who rely on white-label solutions, every system utilized on our platform is developed and refined exclusively by our in-house team of dedicated experts.

Key Statistics



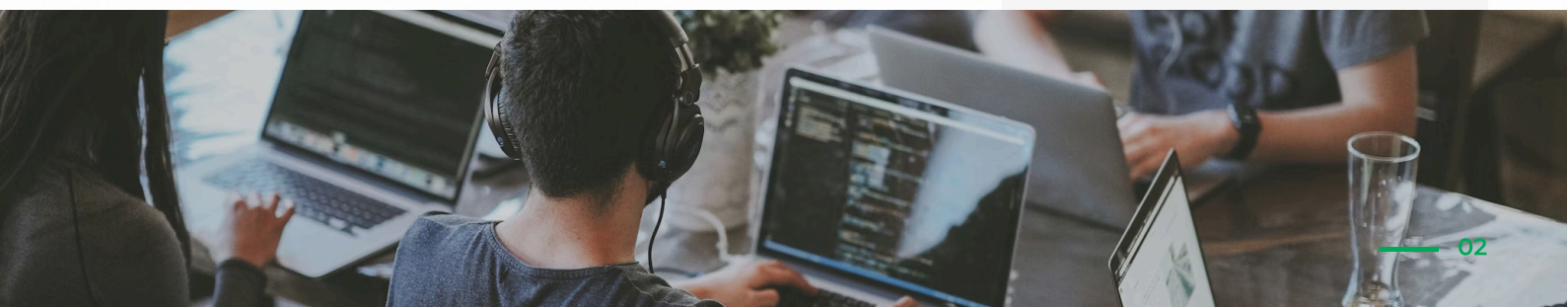
10,000+
ACTIVE INVESTORS



55+
COUNTRIES
WORLDWIDE



7+
YEARS EXPERIENCE



Our Purpose & Principles



Our Mission

To provide users with effective ways of earning good returns from the forex market either through our educational system or our expert trading team, also making good returns on behalf of the users. Our educational system is designed to produce independent students able to play a creative role in society.



Our Vision

To reach a platform capitalization value of \$20 Billion USD and grow our user base to more than 15 Million users by 2025, while building an investment platform for the long term that sets the standard to change future generations' fortunes.

2025 Platform Goal: \$20 Billion Capitalization

Target in Progress



Core Values



Transparency

Real-time access to data and verifiable track records.



Honesty

Unwavering honesty in all communications and dealings.



Respect

Mutual respect is the foundation of lasting relationships.



Integrity

Doing the right thing even when no one is watching.



Excellence

Constantly striving to exceed expectations and benchmarks.

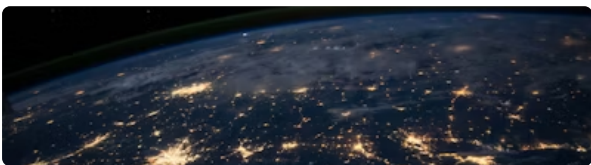
Building the Future Since 2018



2018

The Founding Era

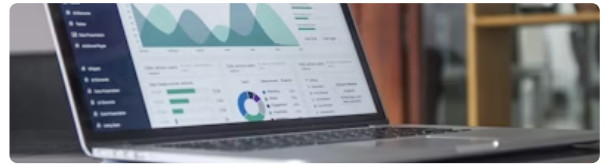
Incorporation in London. Initial team assembled and development of proprietary trading algorithms began.



2021

Global Expansion

Reached 5,000 investors globally. Expanded to 35 countries and opened Asia-Pacific office.



2019

Beta Launch


Launched beta platform with 100 early adopters. Completed first-generation EA systems.




Global Footprint



Market Reach

 **55+ Countries**
Active Operations

 **6 Continents**
Global Coverage

 **24/7 Support**
Multi-lingual Team



Global Headquarters: Nova North, 11 Bressenden Place, London, United Kingdom, SW1E 5BY

Our Team Excellence

Over 100 Dedicated Professionals Worldwide



25+

Trading Specialists

Expert traders monitoring markets 24/7 across all time zones, ensuring optimal execution and risk management.



30+

Technology Developers

Software engineers and AI specialists developing our proprietary trading systems and platforms.



15+

Investment Analysts

Analysts covering multiple sectors including energy, real estate, construction, and agriculture.



20+

Client Relations

Dedicated support professionals providing 24/7 assistance in multiple languages.



10+

Compliance & Risk

Specialists ensuring regulatory adherence and maintaining highest security standards.



10+

Administrative Support

Professionals ensuring smooth day-to-day operations across all departments.

Our Commitment to Excellence

The Westcott Partners advisory group is focused on providing outstanding

Our Competitive Advantage

Four Pillars of Excellence



Proprietary Technology

All systems developed in-house. Complete ownership and control over algorithms, ensuring immediate responsiveness.



The Right Timing

Low-latency execution systems and 24/7 market monitoring. In forex, time is money, and we maximize every second.



The Right Team

Decades of combined experience. Our visionary group is focused on conveying outstanding outcomes.



The Right Technology

AI integration improves analytical accuracy. Machine learning capabilities adapt to changing market conditions.

✓ No Third-Party Technology Utilized

“

"At Westcrest Partners, we provide exceptional results, closely monitored and measured by the Westcrest Partners trading team of dedicated experts. No White label or 3rd party technology utilized."

— The Founders

Invest Wisely & Watch It Grow

Data-Driven



Decisions based on thorough analysis, not emotion.

Risk Mitigation



Preserving capital is as important as acquiring more.

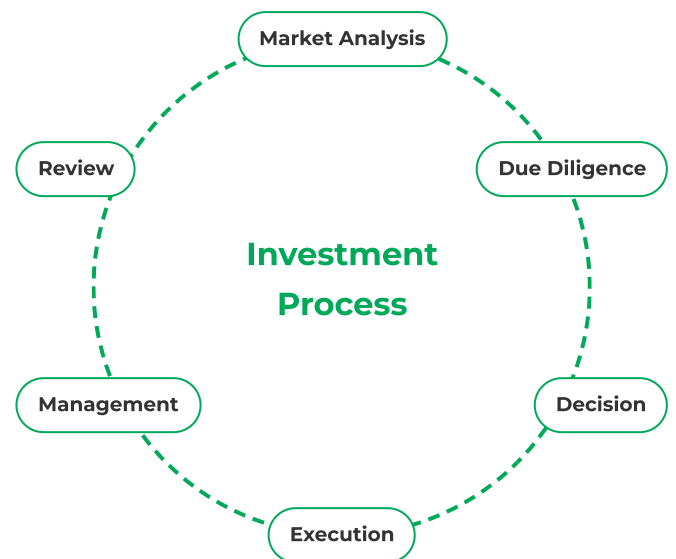
Long-Term Growth



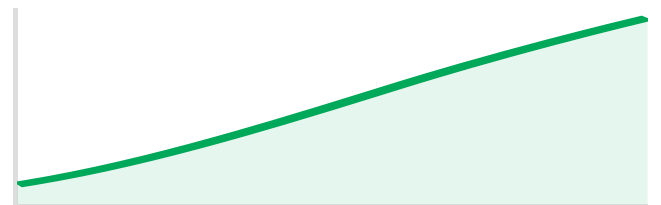
Building wealth that benefits future generations.

Strategic Approach

- ✓ **Diversification:** Spreading risk across multiple sectors.
- ✓ **AI-Powered Analytics:** Leveraging machine learning for insights.
- ✓ **Continuous Monitoring:** 24/7 oversight of all positions.
- ✓ **Risk-Adjusted Returns:** Balancing opportunity with prudence.



Performance Trajectory



Diversified Investment Portfolio



Petroleum & Energy

Exploration, production, and midstream operations. Capitalizing on global energy demand.

Active Projects: 12+



Real Estate

Global commercial leasing, property management, and development. \$149B Assets Under Management.

Global Leader



Construction & Engineering

Industrial engineering solutions and infrastructure development projects globally.

Major Projects



Agro Farming

Sustainable agriculture, crop production, and food security initiatives.

Sustainable Practices

Sector In-Depth Analysis

Detailed Sector Breakdown



Petroleum & Energy

Leveraging decades of expertise in capital formation and management. Unique tax benefits including Intangible Drilling Costs (IDC) deductions. Direct participation in working interests with top operators.



Real Estate

Full lifecycle perspective ensuring assets help occupiers thrive. #1 global market position in leasing and management. 115,000 employees serving clients in 100+ countries, including 95 of Fortune 100.



Construction

Solving complex manufacturing problems. Focus on lean principles and technical excellence. Projects range from continuous improvement to multi-billion dollar industrial facilities.



Agro Farming

Investing in food security and sustainable practices. Tangible assets with steady demand. Commitment to local communities and innovative farming technologies.

Technology & Innovation



Powered by Artificial Intelligence

Our proprietary systems use AI to significantly improve analytical accuracy, develop algorithmic strategies, and enhance platform efficiency.



Predictive Analytics

Analyzing historical and real-time data to identify patterns.



Machine Learning

Systems that learn and adapt to changing market conditions.



Low-Latency

Minimize delays between decision and execution.

Westcrest Trading Terminal v4.0

● System Active



AI Confidence

98.4%

Latency

4ms

✓ 99.97% Uptime Guarantee




Layered Security Architecture

- ✔ **Cold Storage:** 98% of assets held offline.
- ✔ **Multi-Signature:** Required for all transfers.
- ✔ **24/7 Monitoring:** Real-time threat detection.
- ✔ **AES-256 Encryption:** Military-grade data protection.
- ✔ **Biometric Access:** Strict physical security.

Risk Management

 Market Risk **High Mitigation**



 Operational Risk **Very High Mitigation**



 Counterparty Risk **High Mitigation**



 Regulatory Risk **Full Compliance**



FSCS Insurance Protection

Coverage up to \$250,000

Sustainability & ESG Commitment

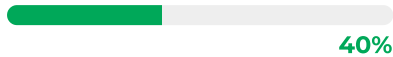
Committed Since 2002



Environmental

Measuring and minimizing our carbon footprint.
Investing in green technology and sustainable projects.

Carbon Reduction Target



40%



Social

Investing in communities, promoting financial inclusion, and fostering a diverse, inclusive workplace.

50+

Communities Served



Governance

Rigorous ethical standards, transparency, and clear accountability throughout the organization.

100%

Transparency Rating

Aligned with UN Sustainable Development Goals